

# Personality Classification:

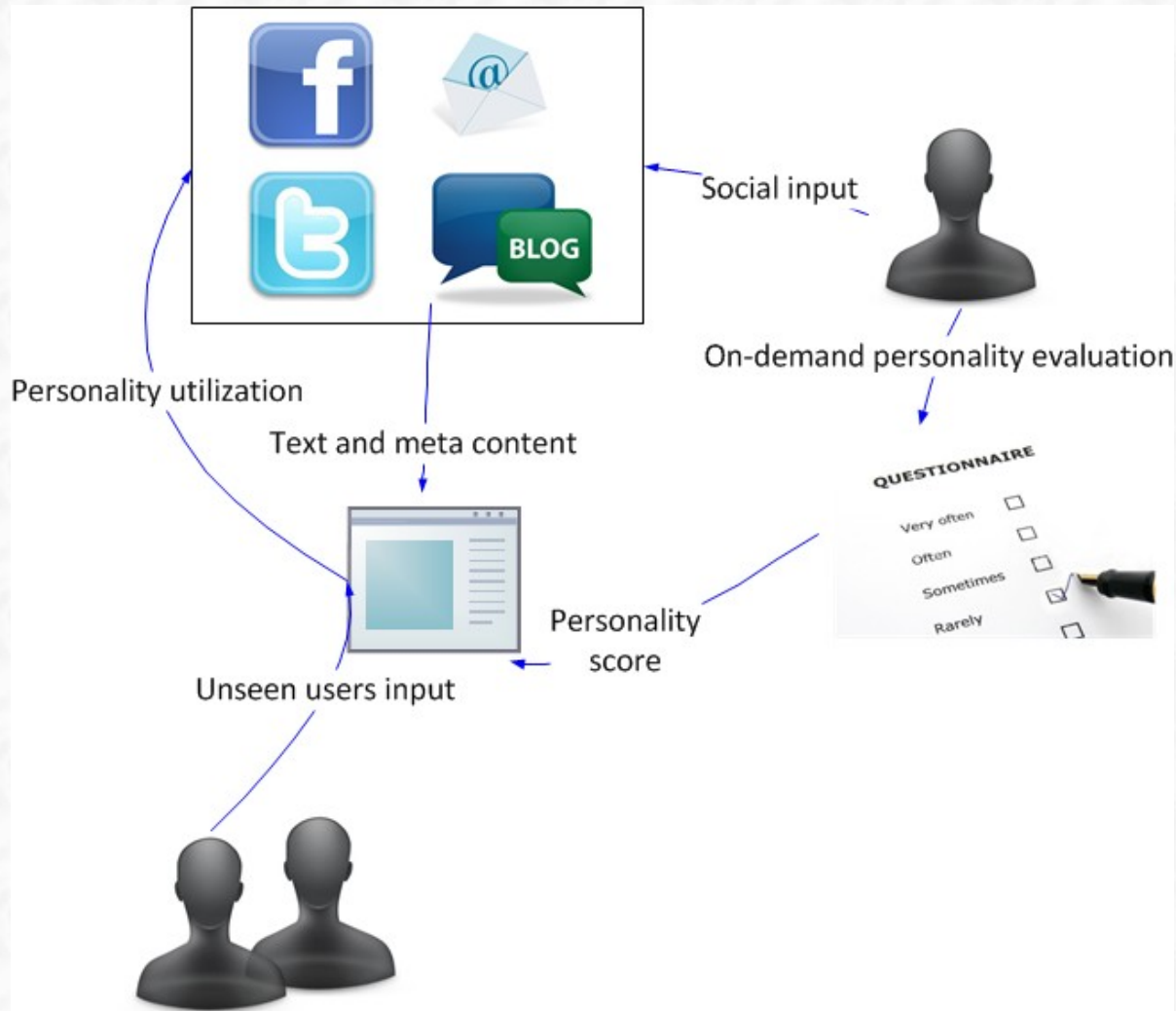
## Computational Intelligence in Psychology and Social Networks

A. Kartelj, School of Mathematics, Belgrade

V. Filipovic, School of Mathematics, Belgrade

V. Milutinovic, School of Electrical Engineering, Belgrade

# Problem setting



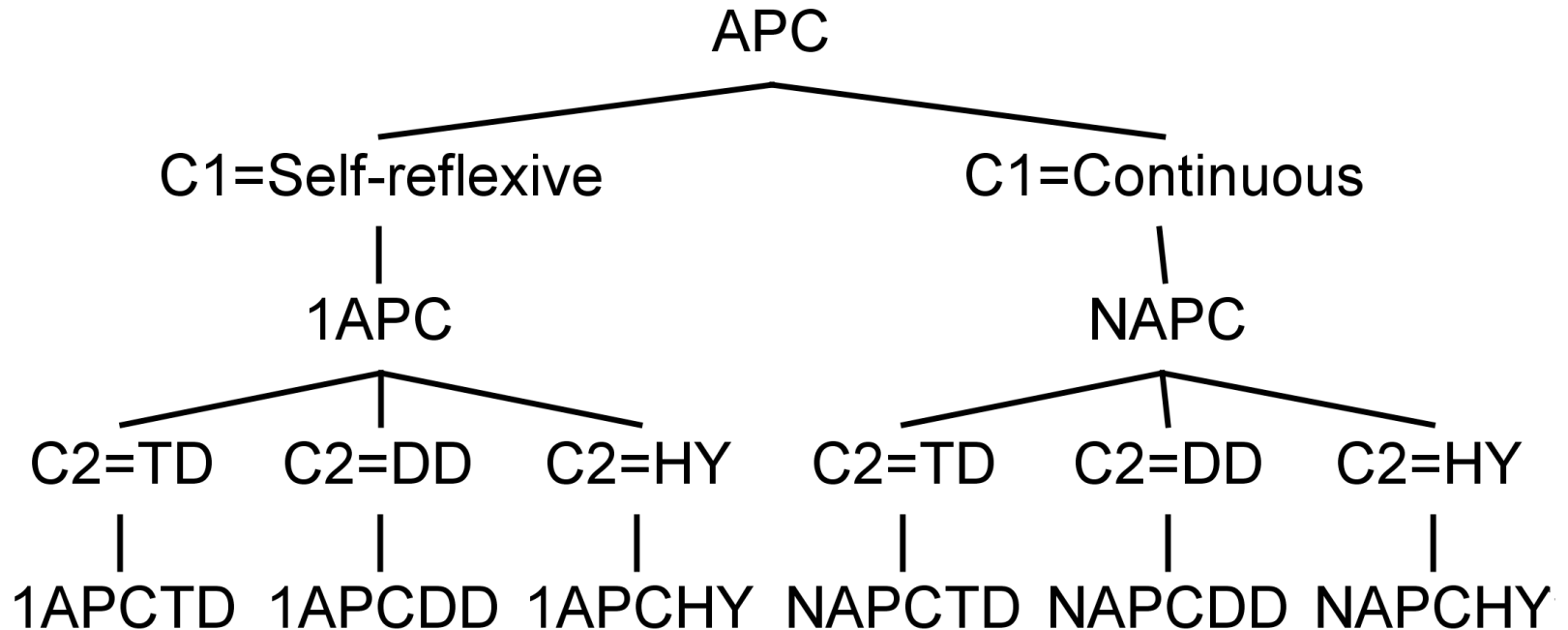
# The big five model



# Existing solutions concepts

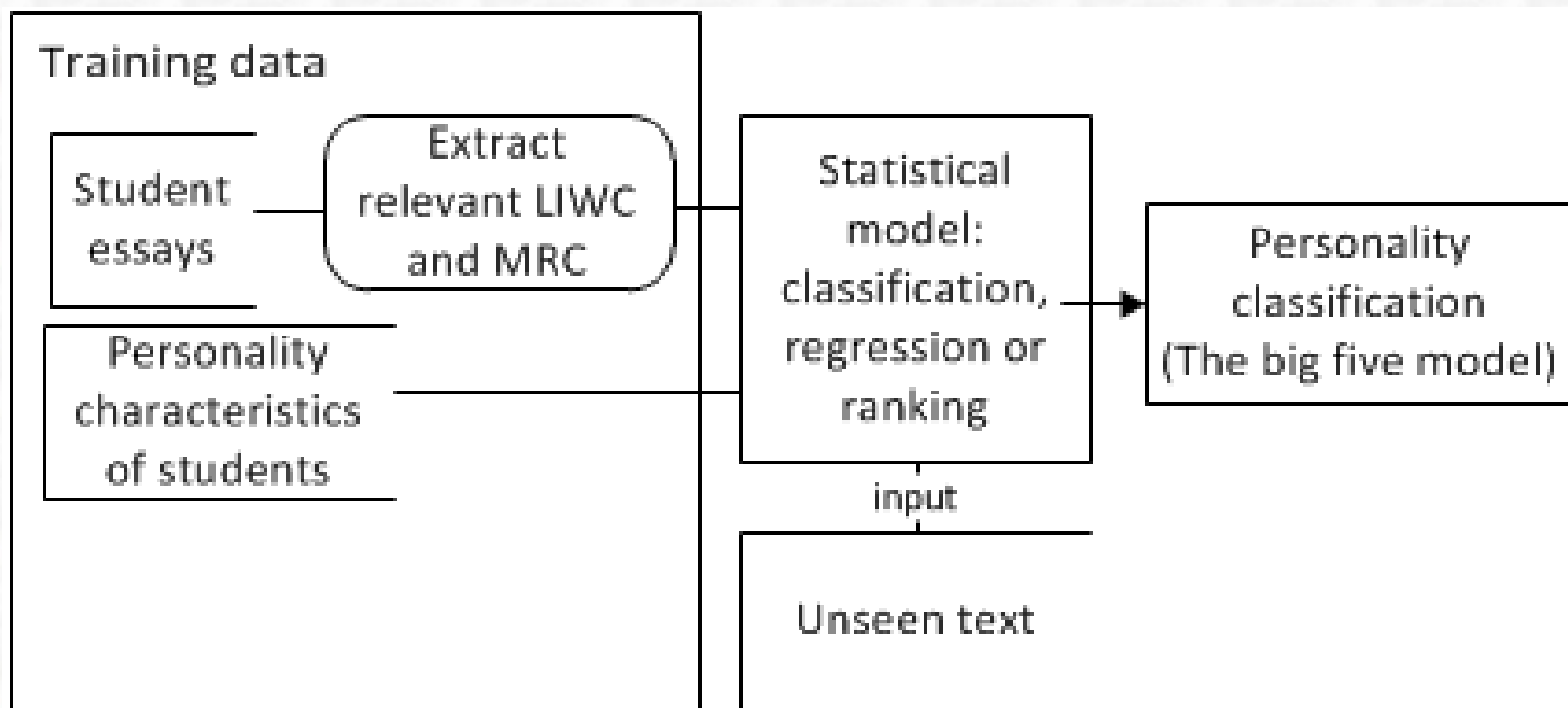
- Corpus:
  - Essay, weblog, email, news group, Twitter counts...
- Personality measurement:
  - Questionnaire (internet and written). We are searching for an alternative!
- Model:
  - Stylistic analysis, linguistic features, machine learning techniques.

# Proposed classification of existing solutions



# Selected solution #1

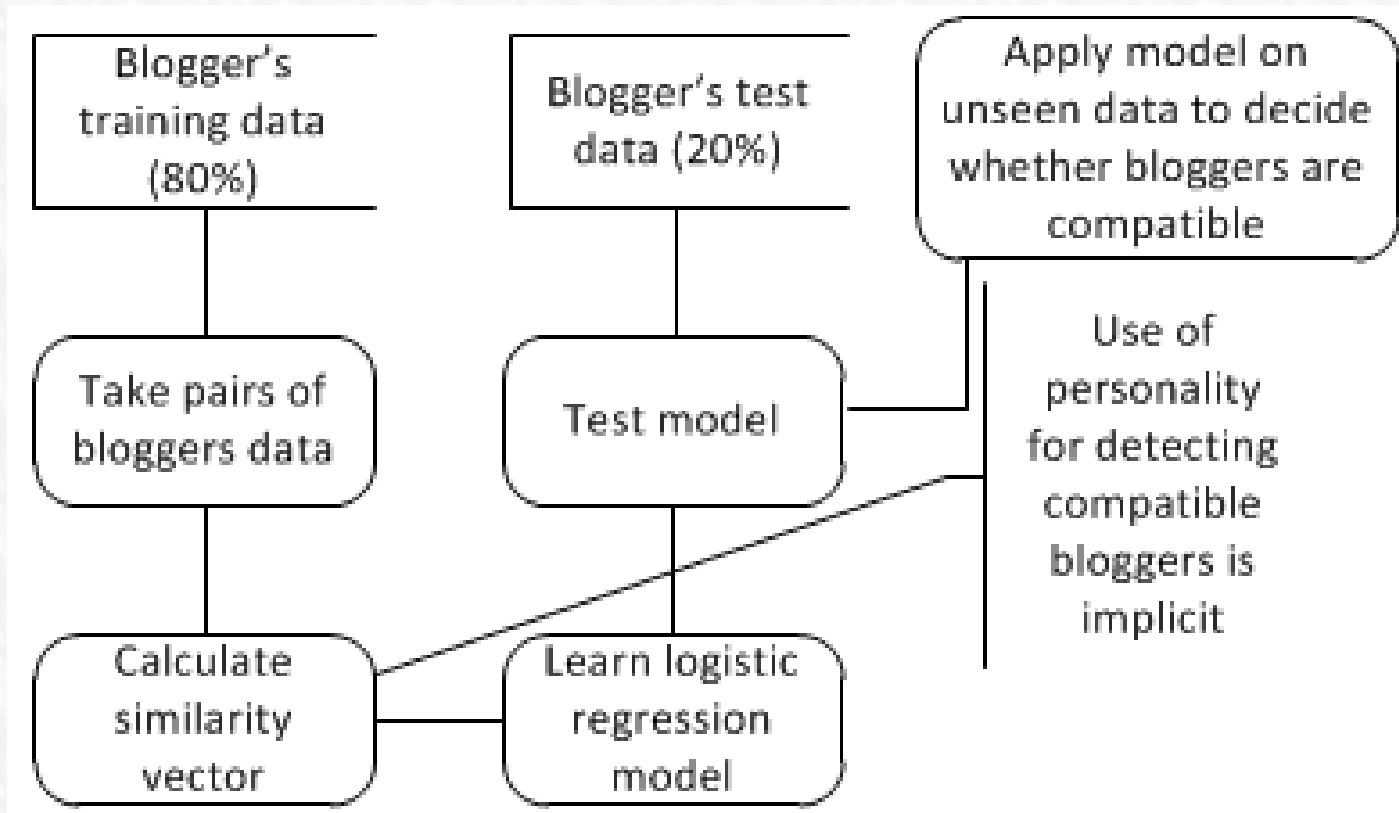
Mairesse, F. et al., Using linguistic cues for the automatic recognition of personality in conversation and text





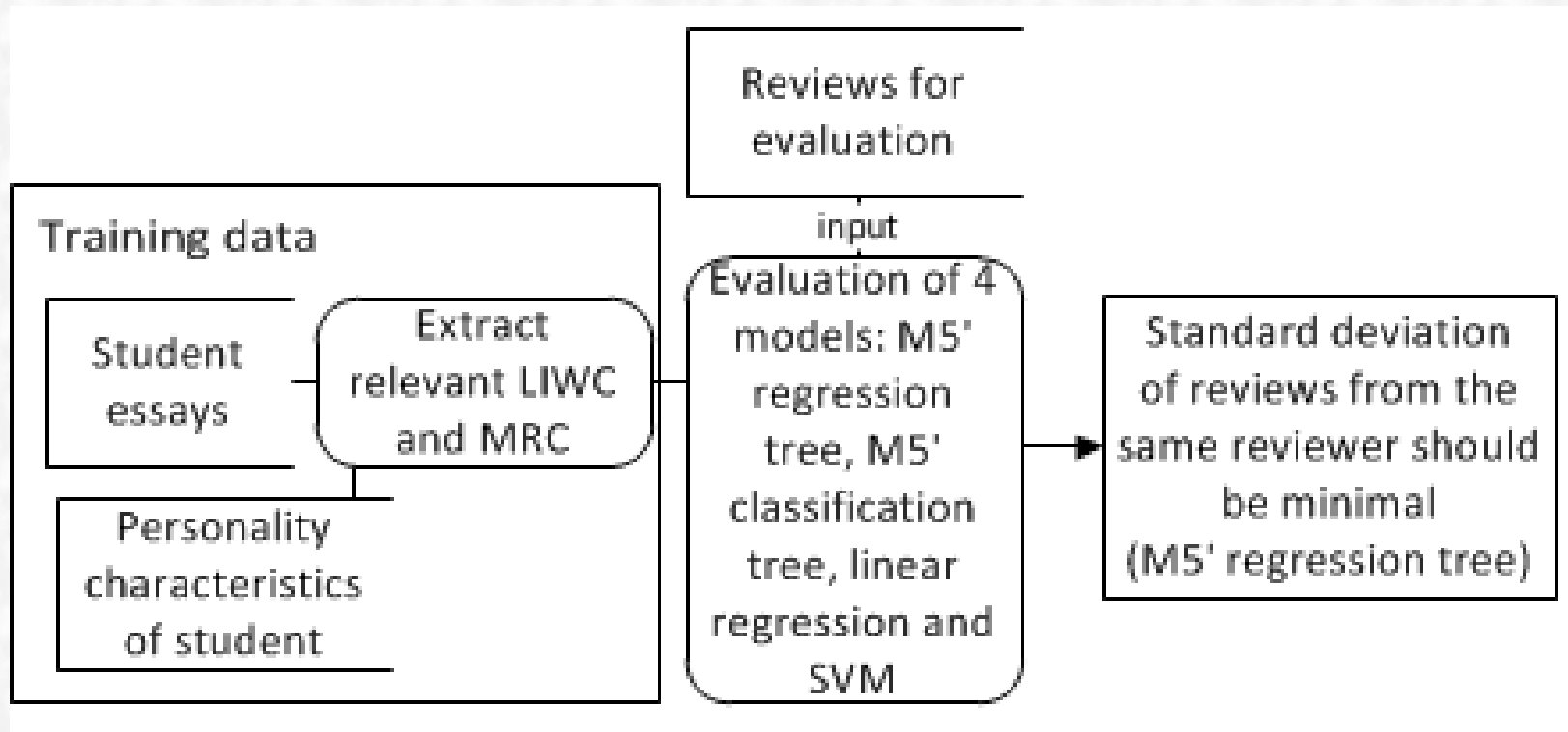
# Selected solution #2

Wang, F., et al., Personality based latent friendship mining.



# Selected solution #3

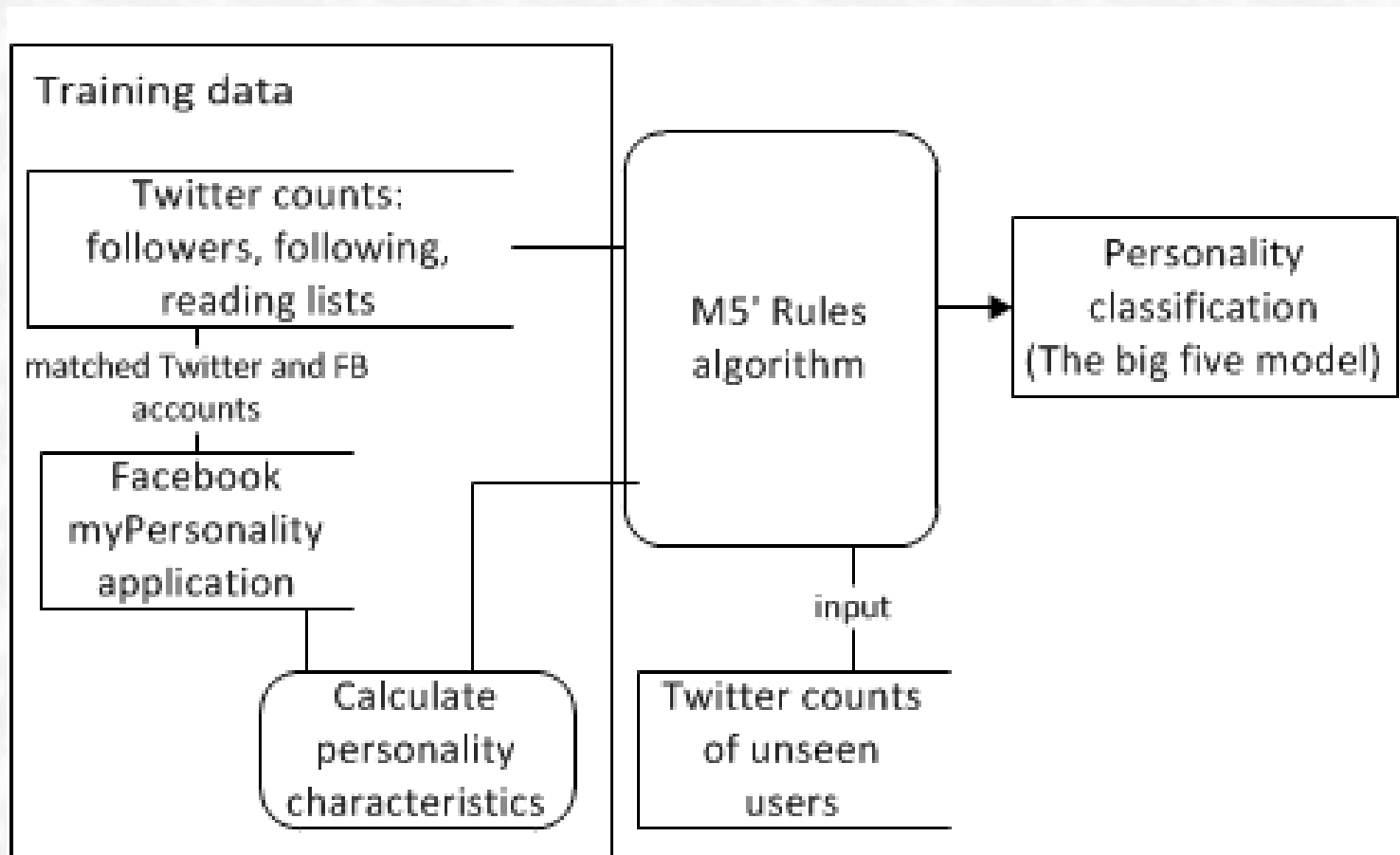
Roshcina, A., et al., A comparative evaluation of personality estimation algorithms for the twin recommender system.





# Selected solution #4

Quercia, D., et al., Our twitter profiles, our selves: Predicting personality with twitter.



# New ideas and future work

- New types of corpora:
  - Comments (news, youtube.com), social feeds...
- New types of personality assessment:
  - Youtube tagging, FB app. with hidden tasks.
- New models:
  - Clustering, hybrid methods...
- Dynamical system.

# Personality classification:

Computational Intelligence in Psychology  
and Social Networks

[aleksandar.kartelj@gmail.com](mailto:aleksandar.kartelj@gmail.com)

Thank you for your attention.  
**QUESTIONS?**